



# Stable Stack Bundle Conveyor



## Parts and Service Maintenance Manual

May 17, 2019  
Rev. A

10010 Conveyor Drive, Indianapolis, IN 46235  
Phone:800.578.1755 Fax:317.890.9232

[www.systecconveyors.com](http://www.systecconveyors.com) Email: [info@systecconveyors.com](mailto:info@systecconveyors.com)

\* Digital copy of manual available at [www.systecconveyors.com/manuals](http://www.systecconveyors.com/manuals)



# Table of Contents

- **General Description**
- **How to Order**
- **Systemec On Call Service S.O.S.**
- **Conveyor Safety**
- **Maintenance Schedule**
- **Parts & Assemblies**
- **Electrical**
- **Adjustments**

For items not addressed in this manual, please contact your Systemec regional sales manager or customer service. Additional manuals can be obtained on our website.

# General Description

Systec's Stable Stack Bundle Conveyor is a full width plastic top conveyor section that offers 100% coverage underneath when moving a bundle. It is an alternative to roller conveyor which can mark and damage high gloss material.

The Stable Stack Bundle Conveyor can be configured in straight and 90-degree sections and is the primary device in the Bundle Ejecting System.

Systec's Stable Stack Bundle Conveyor can operate at variable speeds and also speed sync to ancillary equipment. Sections can be made to batch units in order to maximize wasted space on the conveyor system.

As with all Systec Conveyors' equipment, Stable Stack Bundle Conveyor is manufactured 100% in house at our factory in Indianapolis, Indiana.



**OVERALL  
CONSTRUCTION**

Systec's Stable Stack Bundle Conveyor features all welded steel frame construction.

Systec's engineering of the SSBC uses a tight-wrap end pulley system which minimizes the transition and gap between conveyors.



**ADJUSTABILITY**

The legs are designed to adjust easily and accommodate floor inconsistencies or inclines and declines as required. Speeds can be referenced to and from ancillary equipment.



**ENGINEERING**

Systec's Stable Stack Bundle Conveyor is able to integrate with upstream and downstream equipment to reach the demands of high-speed processes. Speeds of the conveyor can be variable in an automatic or manual mode.

# Ordering Replacement Parts

When ordering parts, please contact Systemec at the address and numbers below.

**Conveyor Parts Department  
10010 Conveyor Drive  
Indianapolis, IN 46235**

**Tel 800.578.1755  
Fax 317.890.9232**

**Online [www.systemecconveyors.com](http://www.systemecconveyors.com)  
Email [parts@systemecconveyors.com](mailto:parts@systemecconveyors.com)**

# S.O.S. Program

## Systemc On Call Service

In an effort to provide enhanced service and support to our customers, Systemc Conveyors has instituted a dedicated service support line manned by knowledgeable personnel.

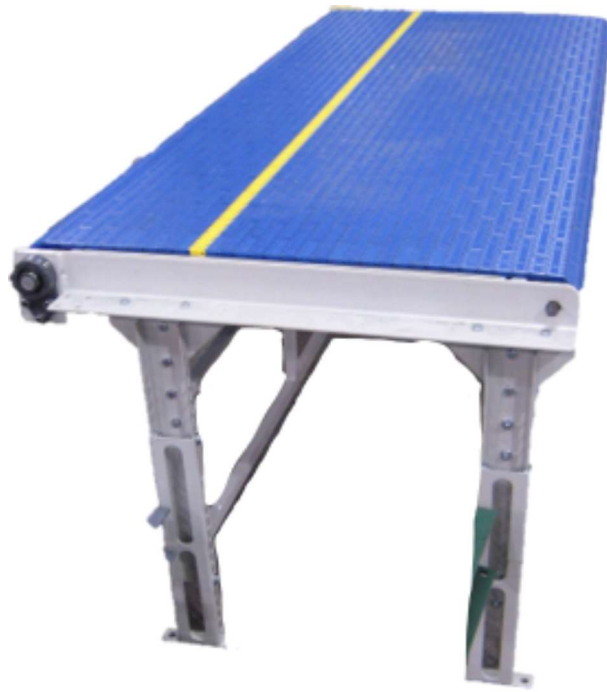
**During the warranty period** this service is provided free of charge. The standard warranty period is 12 months from the start-up. The standard warranty covers parts, but does not cover labor. The Systemc On-Call Service program is intended to assist our customers in their efforts at diagnosing and servicing their new equipment during the warranty period.

**Following the warranty period**, Systemc On-Call Service program is provided on a fee-for-services basis.

**VPN Access** is available to allow remote diagnostics and programming updates. Remote support is provided at current service rates.

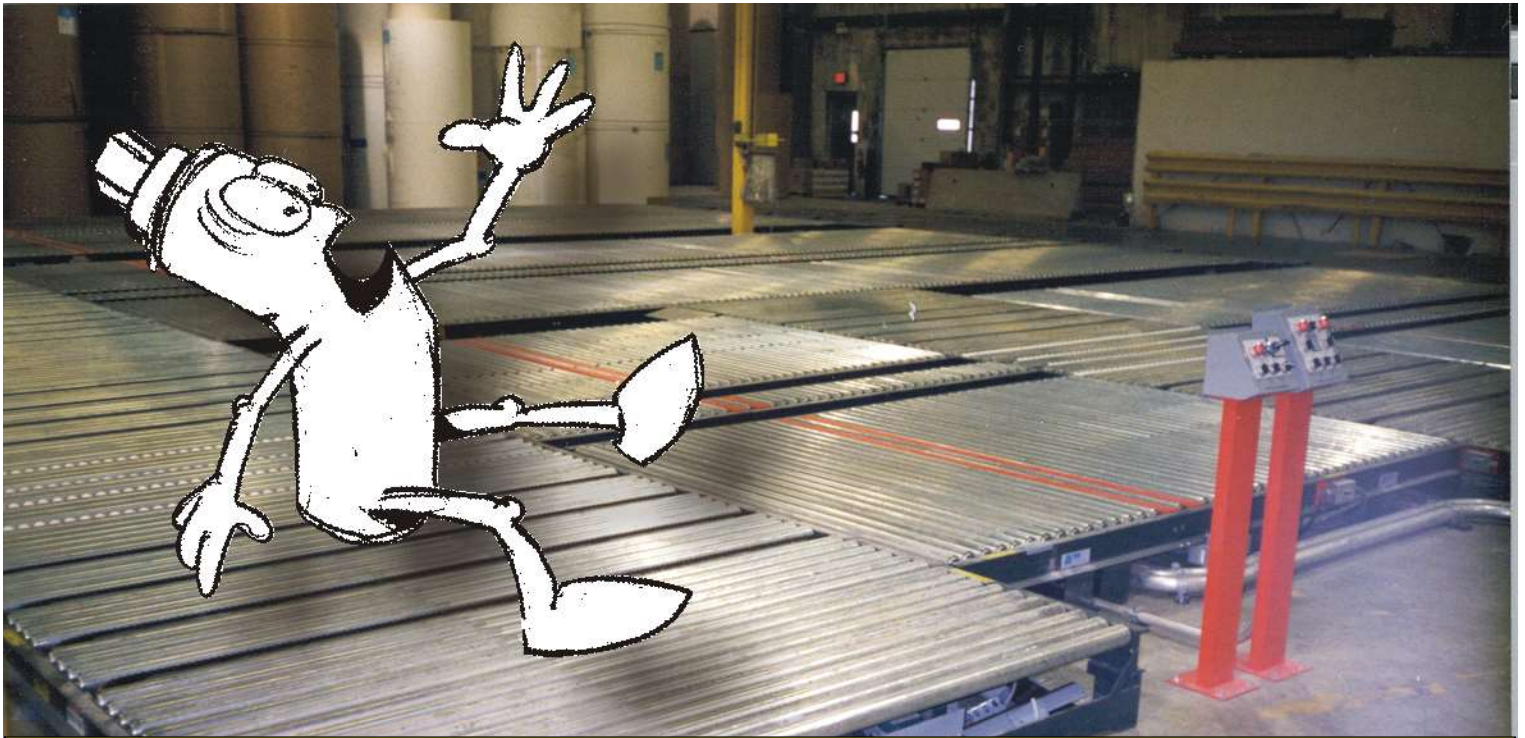
**For more information on this program:**  
**contact your sales manager or call us at 800-578-1755**

# Conveyor Safety



# Conveyor Safety

Never walk on conveyors! Attempting to stand or walk on roller conveyors will likely result in an injury.

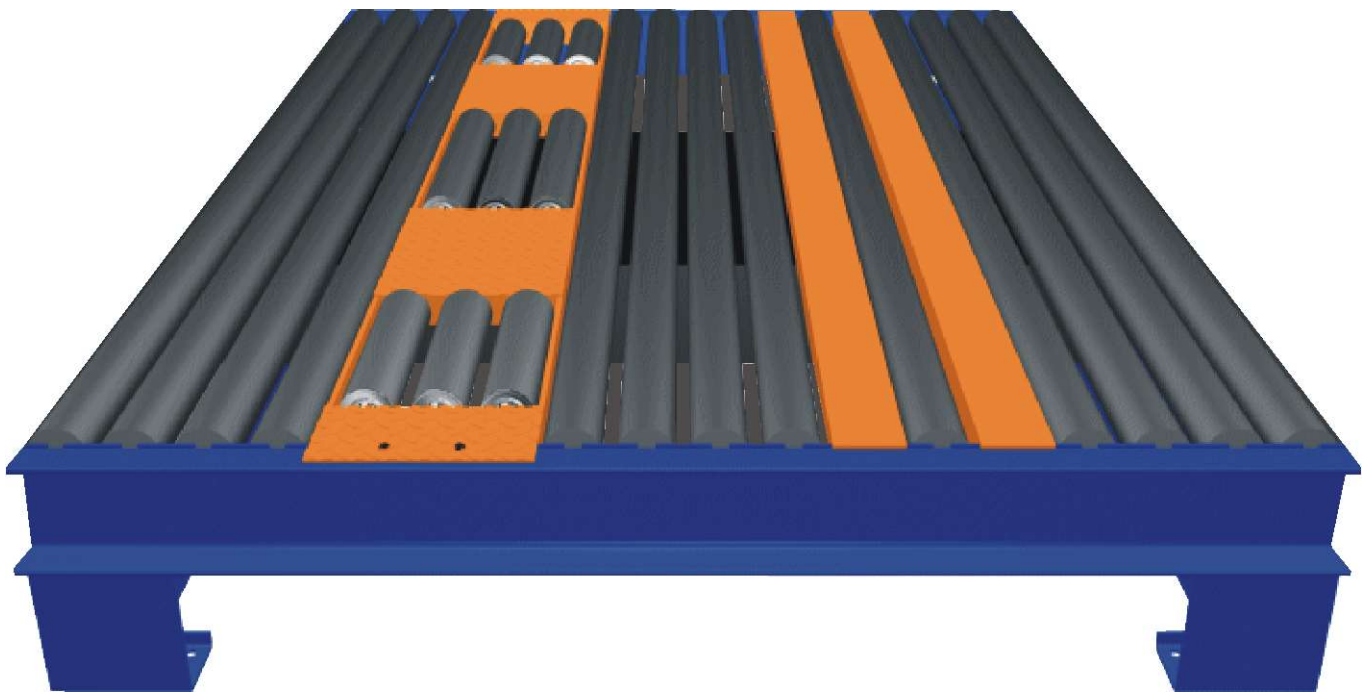


**DO NOT WALK  
ON CONVEYORS**

SYSTEC CONVEYORS - INDIANAPOLIS, INDIANA - 1-800-578-1755 - P/N 000-0303-00

# Conveyor Safety

We recommend installing walkplates for safe crossing.





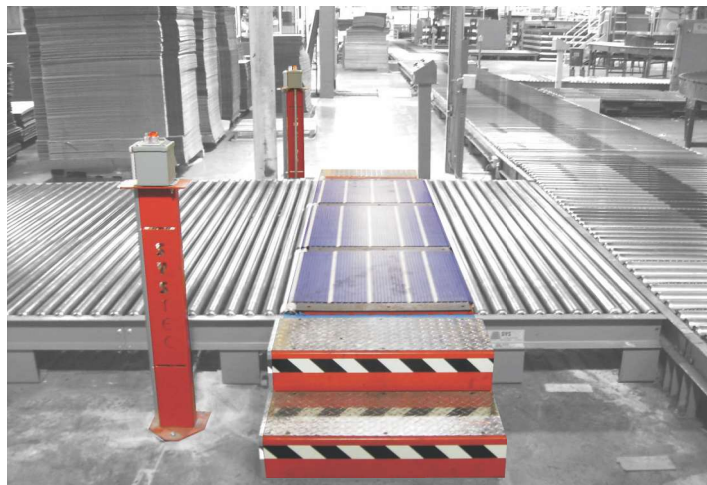
# Conveyor Safety

Designated ancillary walkways include:

Plastic Stable Stack Conveyors

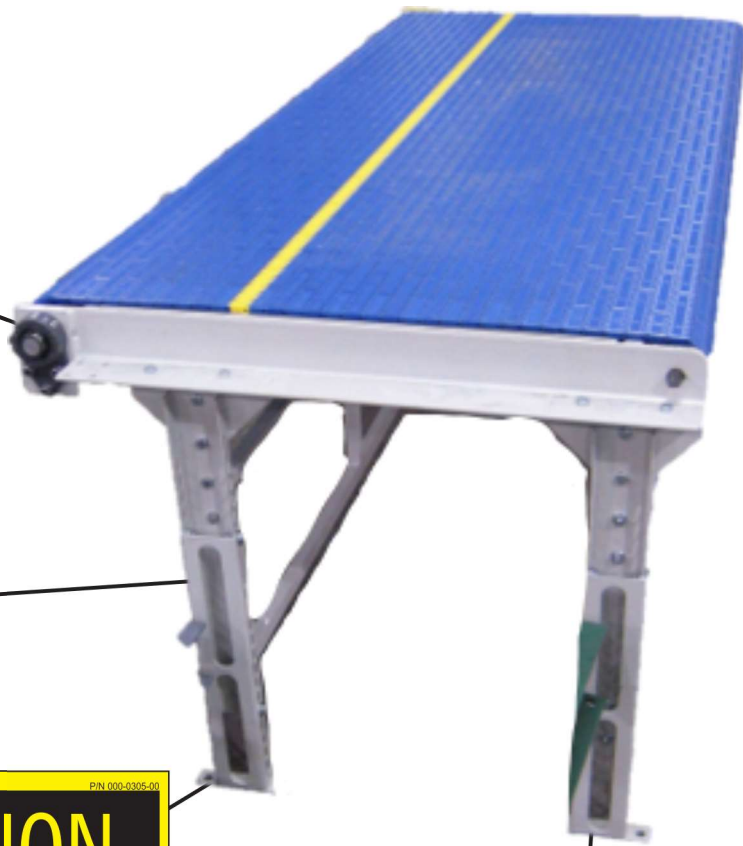


Safewalk



# Conveyor Safety

Typical safety markings for the Load Rotation Device are shown below.



# Conveyor Safety

Lockout is a very important part of your Maintenance and Service department procedures. Systec provides a lockout switch for each conveyor line and device.



Note: Only authorized personnel should perform service and maintenance on any conveyor equipment and controls.

For safety questions regarding your specific device, contact us at 800.578.1755.

# Maintenance Schedule

This Maintenance Schedule is intended to cover all basic types of conveyor and the related devices and components. Although your system may not have all of the parts listed below, this schedule should help in Identifying those components or parts that may require service or inspection that may otherwise be neglected. Should you need assistance in identifying the location of some of these components, contact Systec's Customer Service Department at 800.578.1755

ITEM	INSPECTION OR SERVICE REQUIRED	500 HRS.	1,000 HRS.	2,500 HRS.	5,000 HRS.	10,000 HRS.
Gearmotor	Clean, Check for Noise, Leaks and Mounting	X				
	Check Oil Level			X		
	Change Oil					X
Bearings	Check Roller Bearings for Noise				X	
	Check Pillow Block and Flange Block bearings for Noise, Mounting and Lubrication	X				
Belt	Check for Belt Wear, Tracking and Tension		X			
Chains	Check Tension, Wear, Lubrication and Adjustment	X				
Wire Cables	Check Tension, Wear and Adjustment	X				
Springs	Check Tension, Wear and Adjustment	X				
Sprockets	Check Alignment, Wear and Mounting	X				
Pulleys	Check Alignment, Wear and Mounting	X				
UHMW Blocks & Pads	Check for Wear and Fit			X		
Cams & Rollers	Check for Wear and Alignment	X				
Transfer Rails	Clean with Degreaser	X				
Photoeyes	Clean with Soft Cloth or Dry High Pressure Air	X				
Limitswitches	Clean Debris and Check Arm for Free Movement	X				
Proximity Switch	Clean Debris and Check for Proper Operation	X				
Pendant Switch	Check for Proper Operation			X		
Lockout Switch	Check for Proper Operation and Safety Labels			X		
Foot Switch	Check for Proper Operation			X		
Foot Valve	Check for Proper Operation			X		
Strobe Light	Check for Proper Operation			X		
Sound Alert	Check for Proper Operation			X		
Motion Detector	Check for Proper Operation			X		
Load Measuring Device	Check for Proper Operation			X		
Air Filter/Regulator	Check and Clean Trap and Adjust Pressure	X				
Solenoid Valve	Check for Air Leaks			X		
Airmount	Check for Air Leaks	X				
Air Supply Line	Check for Air Leaks	X				

## NOTE:

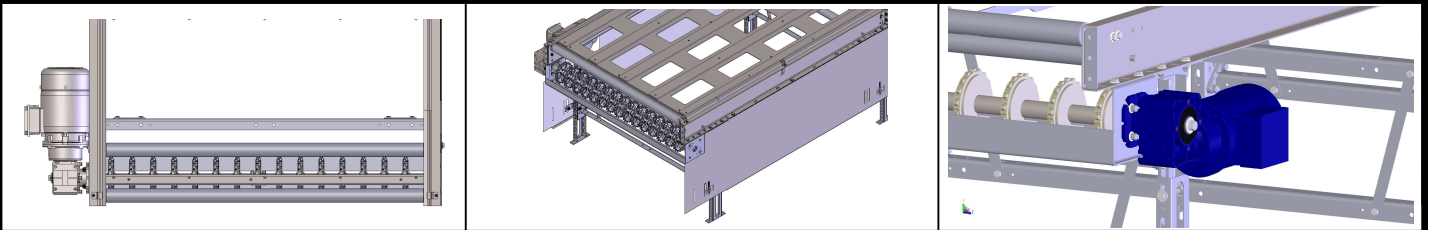
Routine daily cleanup should also include blowing out and removing debris from underneath the conveyor and devices. All drive drums should be inspected for any accumulation of plastic banding and corrugated scrap.

# Monthly Inspection

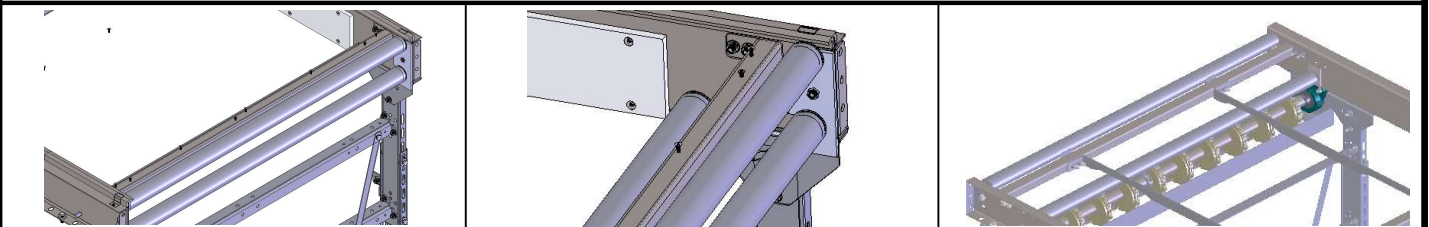
This device specific preventative maintenance schedule is intended to cover all common house keeping tasks for your device. Although this document may not include every component, it does include the most common wear items. Should you need assistance in identifying the location and procedure of the PM, contact Systec's Customer Service Department at 800.578.1755 Ask about our onsite PM training.

## Stable Stack Conveyor

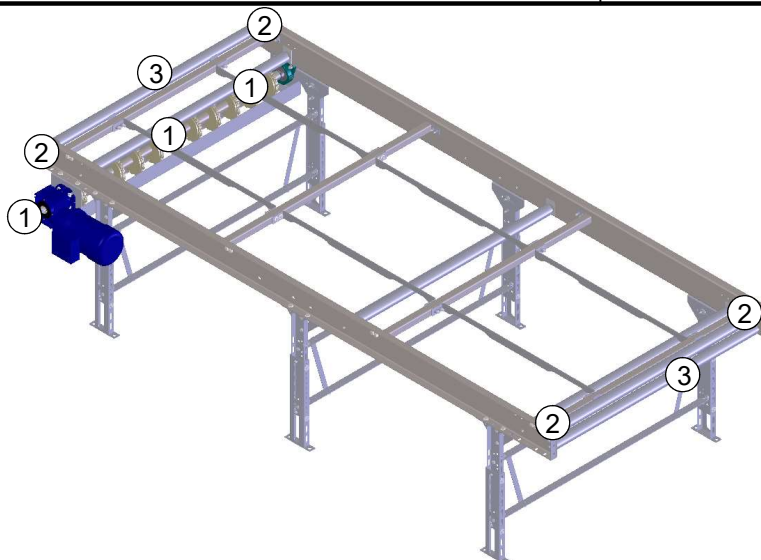
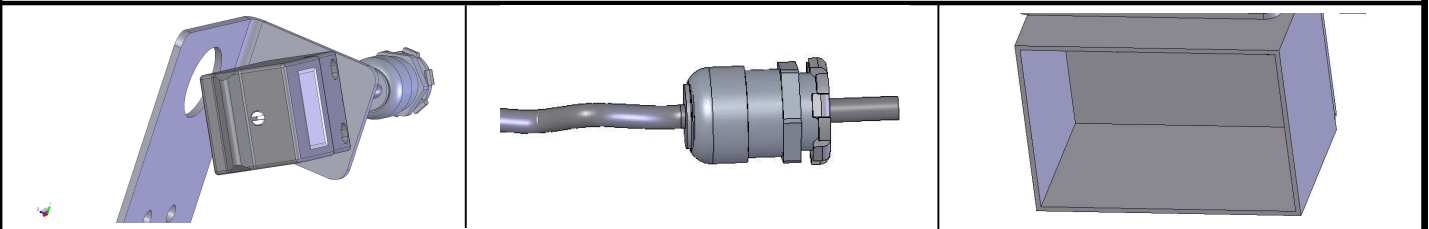
1. Inspect gearmotor, drive train and sprocket alignment



2. Inspect high capacity bearings on rollers



3. Inspect the photoeye alignment and electrical connections



# Parts and Assemblies

Systemc Conveyors is consistently working to improve the quality and performance of our products. Due to these efforts, parts and assemblies of our conveyors and devices are periodically changed or updated. To help provide the most up to date prints, assemblies, and part numbers, a Prints Package was sent with your order. Store this in a safe place for future reference. We recommend you make additional copies.

If you have lost or misplaced the Prints Package for this product, please contact us and have the following information available for our representatives to assist you.

## **From your Mechanical Packing List**

Please provide one of the following.

1. File Name
2. Project #

## **For Assistance with Manuals Prints Packages**

Please contact your sales representative or our service team for assistance.

Systemc Conveyors  
10010 Conveyor Drive  
Indianapolis, IN 46235

Phone: 800.578.1755

Fax: 317.890.9232

[www.systemcconveyors.com](http://www.systemcconveyors.com)

# Electrical

Systec Conveyors is consistently working to improve the quality and performance of our products. Due to these efforts, electrical parts and assemblies of our conveyors and devices are periodically changed or updated. To help provide the most up to date information about your device or product, it is recommended that you contact Systec with any questions.

## **For Electrical Parts & Assistance**

Please contact your sales representative or service team and have the following information available for our representatives to assist you.

## **From your Electrical Packing List**

Please provide one of the following.

1. File Name
2. Project #

Systec Conveyors  
10010 Conveyor Drive  
Indianapolis, IN 46235

Phone: 800.578.1755

Fax: 317.890.9232

[www.systecconveyors.com](http://www.systecconveyors.com)

# Adjustments

Included in this section are adjustments for items that might occur more commonly due to use, from unit being moved or disturbed, or adjustments to be considered during maintenance and adjustments intervals.

## **For Assistance**

Please contact your sales representative or our service team and have the following information available for our representatives to assist you.

## **From your Mechanical or Electrical Packing Lists**

Please provide one of the following.

1. File Name
2. Project #

Systec Conveyors  
10010 Conveyor Drive  
Indianapolis, IN 46235

Phone: 800.578.1755  
Fax: 317.890.9232

[www.systecconveyors.com](http://www.systecconveyors.com)



# Be sure to lockout your equipment before making adjustments.

## Electrical Lockout

Your stable stack bundle conveyor is equipped with a local motor disconnect switch and/or an electrical control panel. We recommend that you follow your facilities Lock-Out Tag-Out safety procedures before servicing any equipment.



## Pneumatic Lockout

Your stable stack bundle conveyor may be located adjacent to pneumatically controlled equipment. We recommend that you follow your facilities Lock-Out Tag-Out safety procedures before servicing any equipment.



## Confined Spaces

Your stable stack bundle conveyor could be located in a pit. Please refer to your facilities Confined Spaces



## Familiarize yourself with the machinery

Your stable stack bundle conveyor may have a diagnostics screen on the HMI. It shows the current IO states of the sensors. The data on this HMI should help you before you begin servicing.

# Common problems and remedies

## **Belt is making clicking sounds with a jerky motion**

Ensure that the sprockets are aligned and in good contact with the belt. Make sure that no sections of the belting is cracked.

## **Device is not moving**

Verify that the motor switch is on and that the overload is not tripped. In automatic, make sure that downstream photo eyes or interlocking are functioning correctly.

## **Load falling apart when starting or stopping**

Verify that the acceleration, speeds and other settings in the VFD match the job specific requirements shown on the electrical schematic. Also ensure that downstream photo eyes are not false tripping

